

REGROOVING INDICATIONS W.MAX = 8

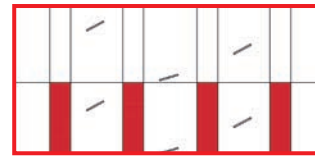
STEER

P.Max = 2 mm

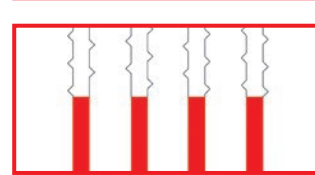
NEW TREAD
(valid only for 235/75 R 17.5)



WORN TREAD



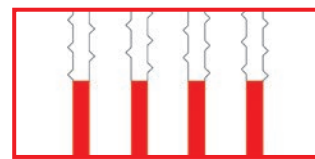
REGROOVED TREAD



NEW TREAD



WORN TREAD



REGROOVED TREAD



DRIVE

P.Max = 2 mm

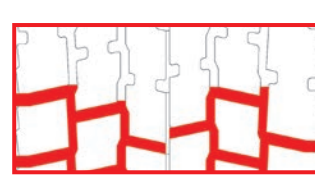
NEW TREAD
(valid only for 235/75 R 17.5)



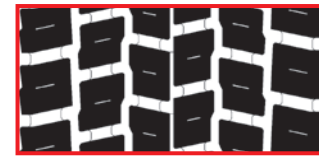
WORN TREAD



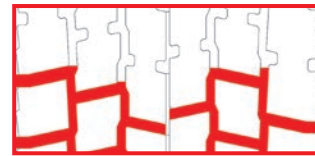
REGROOVED TREAD



NEW TREAD



WORN TREAD



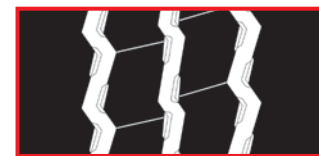
REGROOVED TREAD



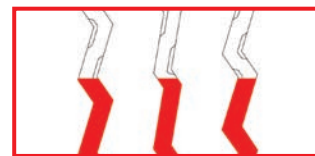
TRAILER

P.Max = 2 mm

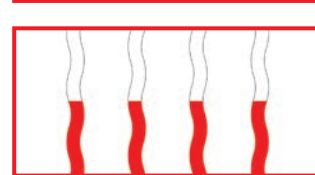
NEW TREAD R 17.5"



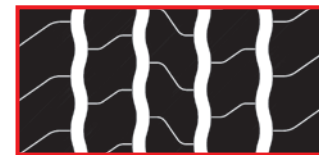
WORN TREAD



REGROOVED TREAD



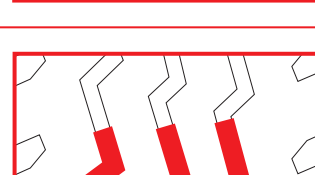
NEW TREAD R 22.5"



WORN TREAD



REGROOVED TREAD



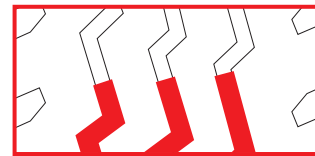
ON-OFF STEER

P.Max = 2,5 mm

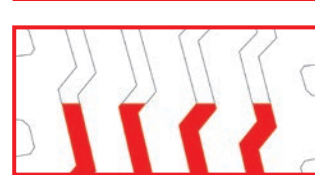
NEW TREAD
(valid only for 13 R 22.5)



WORN TREAD



REGROOVED TREAD



NEW TREAD
(valid only for 315/80 R 22.5)



WORN TREAD



REGROOVED TREAD



ON-OFF DRIVE

P.Max = 2,5 mm

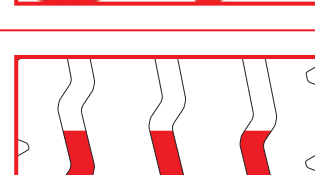
NEW TREAD



WORN TREAD



REGROOVED TREAD



ON-OFF MULTIAXLE

P.Max = 2,5 mm

NEW TREAD



WORN TREAD



REGROOVED TREAD



P. Max: Maximum regrooving depth W. Max: Maximum regrooving width

TECHNICAL DATA

REGULATION EU 2020/740 - Label parameters

SIZE	LOAD INDEX / SPEED CODE	SECTION WIDTH (mm)	DIAMETER (mm)	STATICAL RADIUS (mm)	ROLLING CIRC. (mm)	RIMS	MARKING	(1)	(2)	(3)		
215/75 R 17.5	126/124 M	216	772	361	2355	6.00-6.75	M+S	E	B	B	73 dB	✓
235/75 R 17.5	132/130 M	236	808	377	2464	6.75-7.50	M+S	E	C	B	68 dB	✓
295/80 R 22.5	154/149 M	298	1055	491	3218	8.25-9.00	M+S	C	B	A	71 dB	✓
315/70 R 22.5	156/150 L (154/150 M)	315	1008	466	3074	9.00-9.75	M+S	D	A	A	68 dB	✓
315/80 R 22.5	156/150 L (154/150 M)	315	1076	500	3282	9.00-9.75	M+S	C	B	A	71 dB	✓

STEER

215/75 R 17.5	126/124 M	216	778	364	2373	6.00-6.75	M+S	E	C	B	75 dB	✓
235/75 R 17.5	132/130 M	236	812	378	2477	6.75-7.50	M+S	E	C	B	73 dB	✓
295/80 R 22.5	152/148 M	298	1060	493	3233	8.25-9.00	M+S	D	B	B	74 dB	✓
315/70 R 22.5	154/150 L (152/148 M)	315	1015	469	3096	9.00-9.75	M+S	D	B	B	75 dB	✓
315/80 R 22.5	156/150 L (154/150 M)	315	1083	503	3303	9.00-9.75	M+S	D	B	B	74 dB	✓

DRIVE

215/75 R 17.5	135/133 J	216	775	354	2364	6.00-6.75	M+S/FRT	C	B	B	72 dB	✓
235/75 R 17.5	143/141 J (144/144 F)	240	800	364	2440	6.75-7.50	M+S/FRT	C	B	B	72 dB	✓
245/70 R 17.5	143/141 J (146/146 F)	240	800	364	2440	6.75-7.50	M+S/FRT	D	B	A	70 dB	✓
385/55 R 22.5	160 K	379	996	456	3038	11.75-12.25	M+S/FRT	C	A	A	70 dB	✓
385/65 R 22.5	160 K (158 L)	376	1067	494	3233	11.75-12.25	M+S/FRT	C	A	A	71 dB	✓

TRAILER

13 R 22.5	156/150 K (154/150 L)	318	1122	520	3422	9.00-9.75	M+S	D	B	B	72 dB	
315/80 R 22.5	156/150 K	314	1078	501	3288	9.00-9.75	M+S	D	A	B	72 dB	✓

ON-OFF STEER

13 R 22.5	156/150 K	318	1124	521	3429	9.00-9.75	M+S/POR					
315/80 R 22.5	156/150 K	312	1082	503	3300	9.00-9.75	M+S/POR					

ON-OFF DRIVE

385/65 R 22.5	160 K (158 L)	377	1073	513	3273	11.75-12.25	M+S	C	A	B	71 dB	✓
---------------	---------------	-----	------	-----	------	-------------	-----	---	---	---	-------	---

ON-OFF MULTIAXLE

(1) Fuel efficiency class (2) Wet grip class (3) External rolling noise class Snow grip / 3PMSF marking Rim underlined is measuring rim
FRT: Free Rolling Tyre POR: Professional Off Road Tyres, out of the scope of EC regulation 740/2020.



May 2021 edition. Prometeon Tyre Group S.r.l. reserves the right to modify the contents of this publication without prior notice. Copyright (c) 2021 Prometeon Tyre Group S.r.l. The Pharos logo is trademark used by Prometeon Tyre Group S.r.l. under license.

PHAROS



PHAROS

ON ROAD APPLICATION

STEER



*Allowed

PRECISION AND SAFETY

LONG-TERM RELIABILITY

The 4 straight, longitudinal grooves ensure driving precision, control and safety even in critical conditions.



235/75 R 17.5"

The dense siping on the ribs of the tread prevents irregular wear.

The siping and geometry of the pattern are optimized to achieve reduced braking distances and better lateral grip.

DRIVE



SUPERIOR GRIP PERFORMANCE

Deep blocks to guarantee better grip for the entire tyre life.



235/75 R 17.5"
(no directional tread pattern design)

Directional tread pattern design optimises grip on both wet and dry roads.

Specific roll direction designed to enhance grip on wet roads and reduce noise.

TRAILER



EFFICIENT REAR-VEHICLE PERFORMANCE

Featuring longitudinal, zig-zag grooves provide excellent transverse grip and braking performance, even on wet surfaces.



R 22.5"

R 17.5"

Groove geometry design prevents stone trapping.

The sturdy beads were designed to withstand the severe transverse stress typical of this type of use.

ON-OFF STEER



*Allowed

GREAT STURDINESS

Longitudinal zig-zag shape grooves and wide transversal shoulder grooves enhance grip on slippery surfaces.



315/80 R 22.5"

13 R 22.5"

Optimized groove geometry promotes laceration resistance.

ON-OFF APPLICATION

ON-OFF DRIVE



*Also for use on front axles (all wheel drive vehicles)

HIGH RESISTANCE

Wide and deep transversal grooves enhance roadholding and traction.



Robust shoulder blocks and massive central rib provide resistance against tears and lacerations.

ON-OFF MULTIAXLE



SUPERIOR ROBUSTNESS

Side lugs design reduces heat build-up for maximized tyre integrity and longevity.



New tread pattern design with lugs and sipes on the ribs designed to maximize wet grip and traction even on snowy surfaces.

Three longitudinal, zig-zag shape grooves enhance traction in all conditions, low noise generation and easy cleaning. The stone ejectors safeguard casing and retreadability.